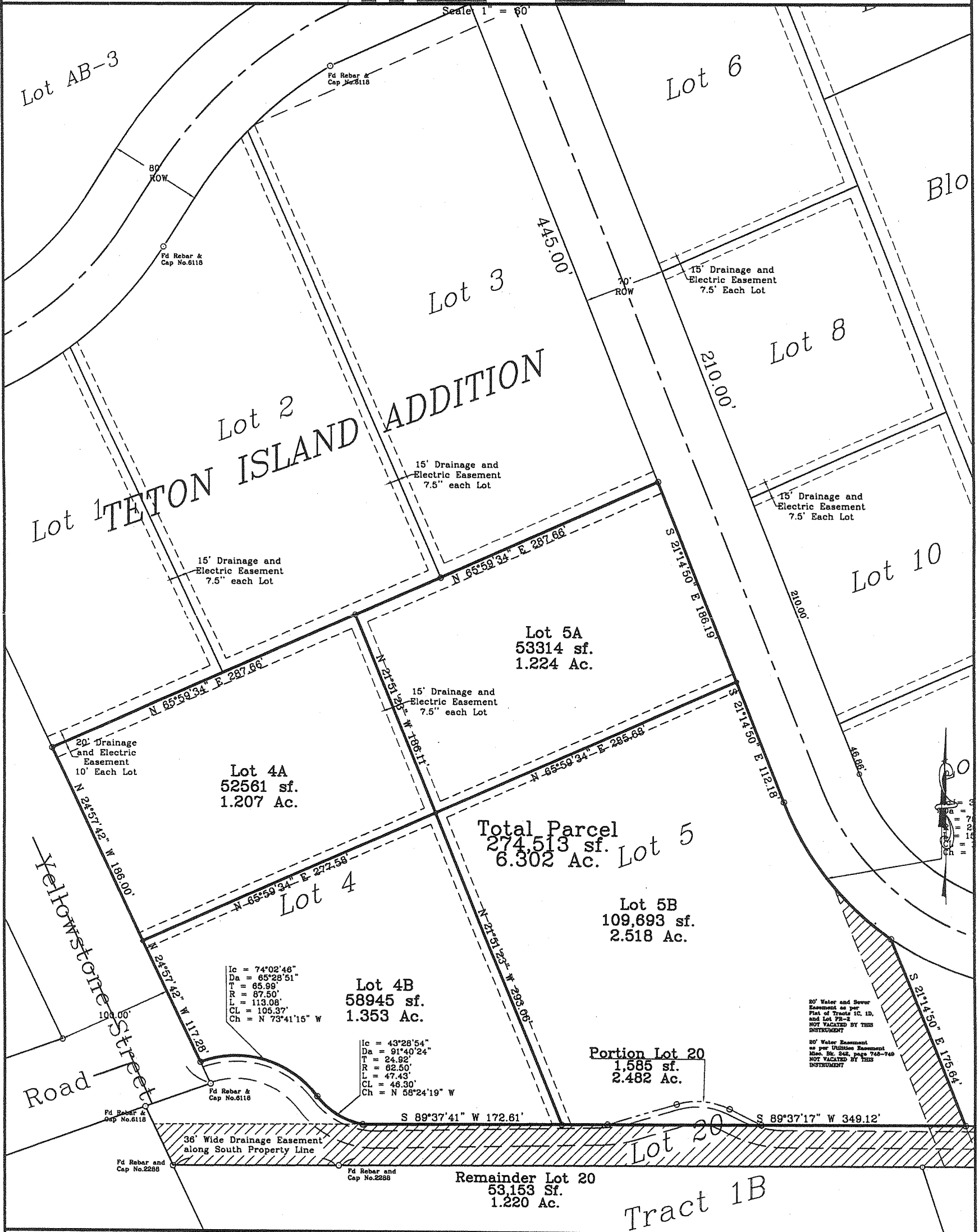
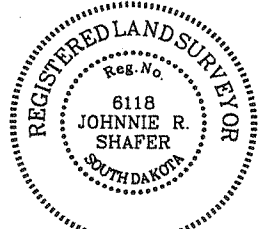


# PLAT OF LOTS 4A, 4B, 5A & 5B TETON ISLAND ADDITION

a Replat of Lots 4, 5 and a portion of Lot 20, Teton Island Addition, a REPLAT of Tract 1C, Tract 1D and Lot PR-2, being a subdivision of Lot AS-1, a portion of Marion Island, Lot 1 of Government Lot 6 in Section 28, Township 5 North, Range 31 East of the Black Hills Meridian, City of Fort Pierre, Stanley County, South Dakota.



- Legend**
- = Monuments Set  
5/8" x 24" Rebar  
and cap No.6118
  - = Monuments Found
  - △ = Section Corner Found
  - = COE Brass Caps



**NOTE:**  
1) The land included in this Plat are subject to a FLOOD PLAIN established by the FEDERAL EMERGENCY MANAGEMENT ADMINISTRATION (FEMA). The location of the potential flood hazard can be determined only with reference to the adopted Flood Insurance Rate Map (FIRM) on file at the Fort Pierre City Office. The Flood Plain identified on the FIRM can be changed by FEMA without notice.

**PROSZ ENGINEERING, INC.**  
315 S. MAIN, BOX 357, BOWMAN, ND 58303  
PHONE: (701) 523-3340 FAX: (701) 523-5243  
5030 AIRPORT ROAD, SUITE A, PIERRE, SD 57501  
PHONE: (605) 224-1123 FAX: (605) 224-0509

Prepared by:  
Johnnie R. Shafer